



COCKROACH FACTSHEET

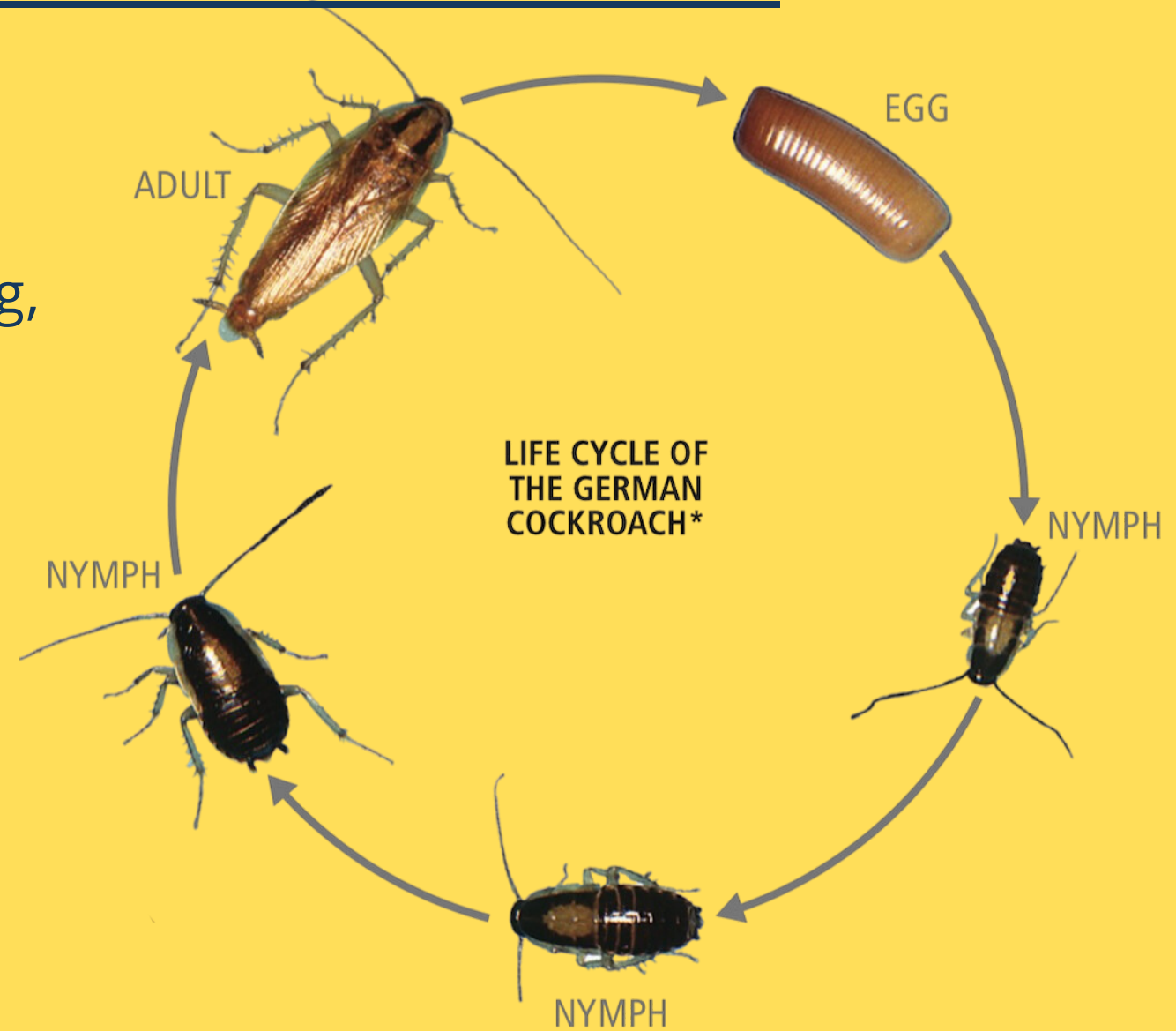


UNDERSTANDING THE COCKROACH LIFECYCLE



Cockroaches pass through three stages of life – egg, nymph and adult.

In general, cockroaches need four things to successfully live in an environment: water, food, shelter and warmth.

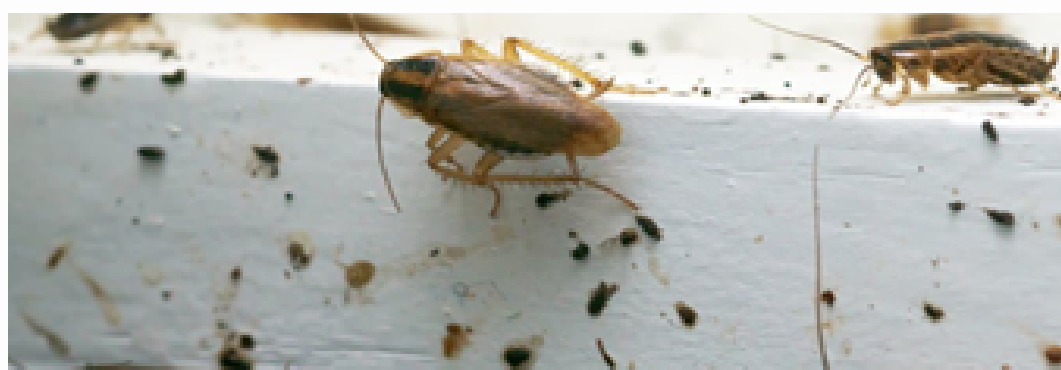


SIGNS OF AN INFESTATION

Live cockroaches at all stages of the lifecycle.

Dead cockroaches and egg casings.

Faecal matter.



INSPECTION

Locate all harbourage sites. Focus on areas where the following conditions exist: warmth, high humidity, free water, darkness and limited air movement.

Look under sinks, fridges, freezers, dishwashers and stoves, around toilets, near rubbish bins and inside cabinets and storage areas.







Check behind objects attached to walls such as pictures, paintings, smoke detectors and posters.



DANGERS/RISKS

- Cockroaches carry and spread diseases caused by pathogens or “germs”, which include bacteria.
- When they travel, they leave a path of urine, faeces, regurgitated saliva and digestive fluids that contain harmful agents. These agents can be transmitted to humans and cause E. coli 0157, Salmonella, typhoid, urinary tract infections, digestive problems, and sepsis.
- These diseases can be life threatening to the very young, very old, immunocompromised individuals and those suffering from serious illnesses.
- Additionally, the saliva, faeces and shedding body parts of cockroaches can trigger asthma and allergies.

COMMON SPECIES

COCKROACH SPECIES	LENGTH (INCHES)	COLOUR AND MARKINGS	EGGS PER CASE	EGG TO ADULT (DAYS)	AVERAGE LIFE SPAN OF AN ADULT (DAYS)	LIFECYCLE
<div>German</div> 	1/2 – 5/8	Light brown with two dark stripes on the pronotum	30 - 40	54 - 215	100 - 200	
<div>American</div> 	1 1/2 - 2	Reddish brown throughout with a pale band on the edge of the pronotum	14 - 16	168 - 786	90 - 706	
<div>Oriental</div> 	1 – 1 1/4	Dark red-brown-black	16	206 - 800	34 - 181	

PEST CONTROL

- Check incoming orders for cockroaches.
- Check your premises regularly for cockroaches.
- Contract a competent pest controller.
- Keep in close contact with your pest controller.
- Carry out treatment in a safe manner.
- Pest proof your premises e.g. cover holes and crevices.
- Maintain a sanitary premises e.g. clean hard to reach areas.

